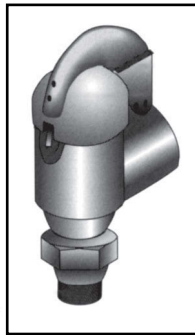
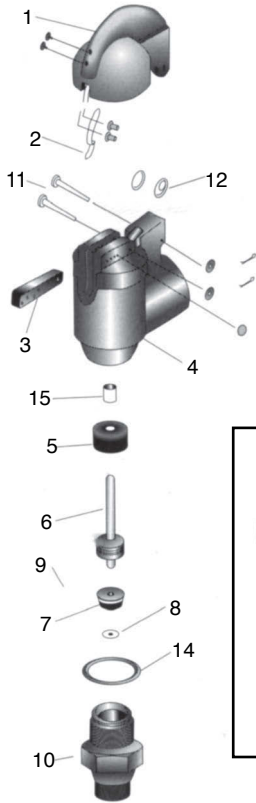


# DEMCO™ STYLE SHEAR RELIEF VALVES

## REPLACEMENT PARTS

BHDE replacement parts for DEMCO™ Style Shear Relief Valves are high-quality OEM Type products. **Complete assemblies also available.**

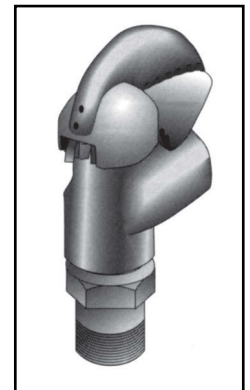
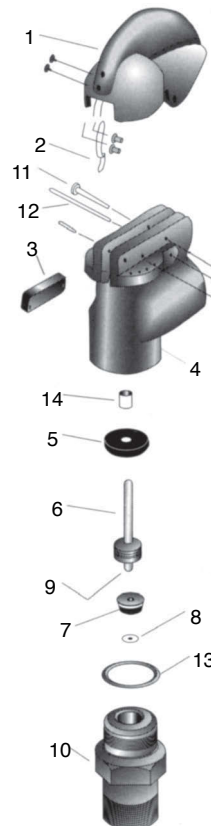


### 2" DEMCO™ RELIEF VALVES REPLACEMENT PARTS

ITEM NO.	MATERIAL & DESCRIPTION	SIZE & PRESSURE PART NO. 1735		
		2" - 1000	2" - 2750	2" - 5000
1	Cover / Aluminum	2368		
2	Latch Spring w/ Screws and Nuts	1720		
3	Shear Bar / SST-17-4PH	17064	17065	
4	Body	N.A.		
5	Cushion / BUNA-N	2372		
6	Stem / SST-17-4PH	1927003	1238003	2373003
7	Seal / BUNA-N	2929	1240	1568
8	Washer / SST-18-8	5884		
9	Cotter Pin / SST	5421		
10	Sub / SST-303	12379003	2930003	2374003
11	Pin, Shear Bar / Steel-4140	5418		
12	Cover Spring / Spring Steel	2375		
13	Pin, Cover / Steel-4140	541837537		
14	Gasket Copper	2931		
15	Bushing / Bronze	17027		
Not Shown	Shear Pin Kit	17548 10 (#6)	17459 10 (#10)	

### 3" DEMCO™ RELIEF VALVES REPLACEMENT PARTS

ITEM NO.	MATERIAL & DESCRIPTION	PART NO.
1	Cover / Alloy	2937
2	Latch Spring w/ Screws and Nuts	1720
3	Shear Bar / 17-4PH SST	17067
4	Body	N.A.
5	Cushion / BUNA-N	2939
6	Stem / 17-4PH SST	1622
7	Seal / BUNA-N	1242
8	Washer / SST-18-8	5884
9	Cotter Pin / SST	5421
10	Sub / 303 SST	2953
11	Pin, Shear Bar / Steel-4140	5418
12	Pin, Cover / Steel-4140	2093
13	Gasket Copper	2954
14	Bushing / Bronze	17028
Not Shown	Shear Pin Kit	2955
	Includes 10 Each	295530 295540 295550 295560



A DIVISION OF BOB HERBERT & ASSOCIATES, INC.  
www.bhde.com